

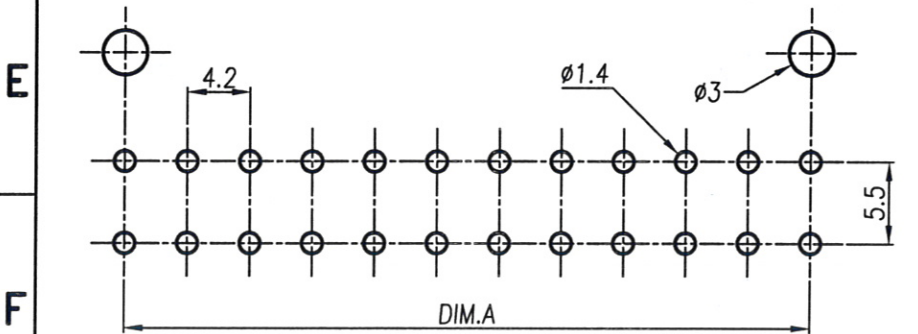
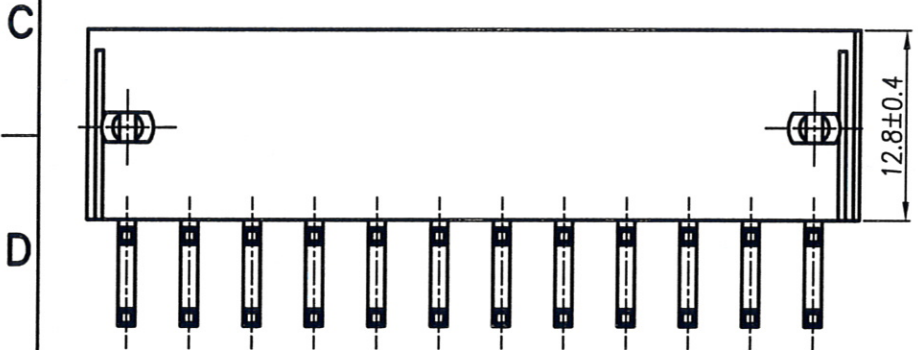
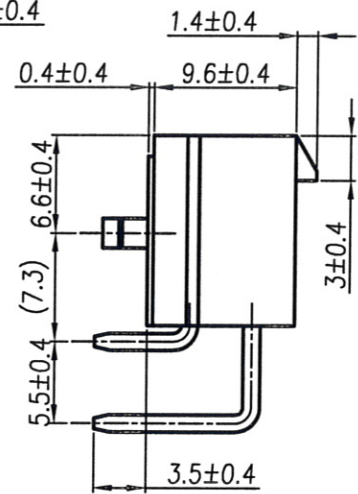
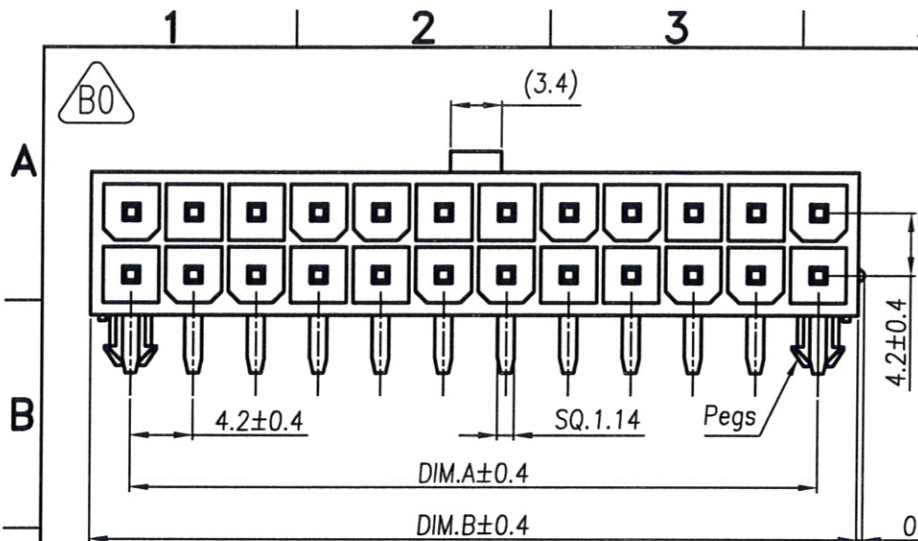
RoHS Compliant

REV	MODIFICATION	DATE	DRAW
A4	ECN20130202	2013.02.26	Seven
A5	Refer to ECN20150413	2015.04.27	Michelle
B0	Refer to ECN20151006	2015.11.04	Abel

Pin	DIM.A	DIM.B	Pin	DIM.A	DIM.B
02	/	5.4	14	25.2	30.6
04	4.2	9.6	16	29.4	34.8
06	8.4	13.8	18	33.6	39.0
08	12.6	18.0	20	37.8	43.2
10	16.8	22.2	22	42.0	47.4
12	21.0	26.4	24	46.2	51.6

Specification
 1.Current Rating:See Note1.(Page 2)
 2.Voltage Rating:600V AC/DC(R.M.S.)
 3.Contact Resistance:10mΩ Max.
 4.Insulation Resistance:1000MΩ Min. At DC 500V.
 5.Dielectric Withstanding Voltage:AC1500V/Minute
 6.Operating Temperature:-40°C~+105°C

Material:
 1.Housing:Thermoplastic UL94V-2
 2.Contact Pin:Copper Alloy t=0.25mm
 Finish:
 1.Housing:Natural
 2.Contact Pin:Bright Tin Plated Over Nickel
 Part No.: AD01203 xx 0 1 x C
 No. Of Pin ——— Packing
 02~24 ——— 5:Bag
 Housing Material ——— Plating
 0:Nylon66 UL94V-2 Natural 1:Bright Tin Plated Over Nickel
 1:Nylon66 UL94V-0 Natural



發行
 10.11.04
 文管中心

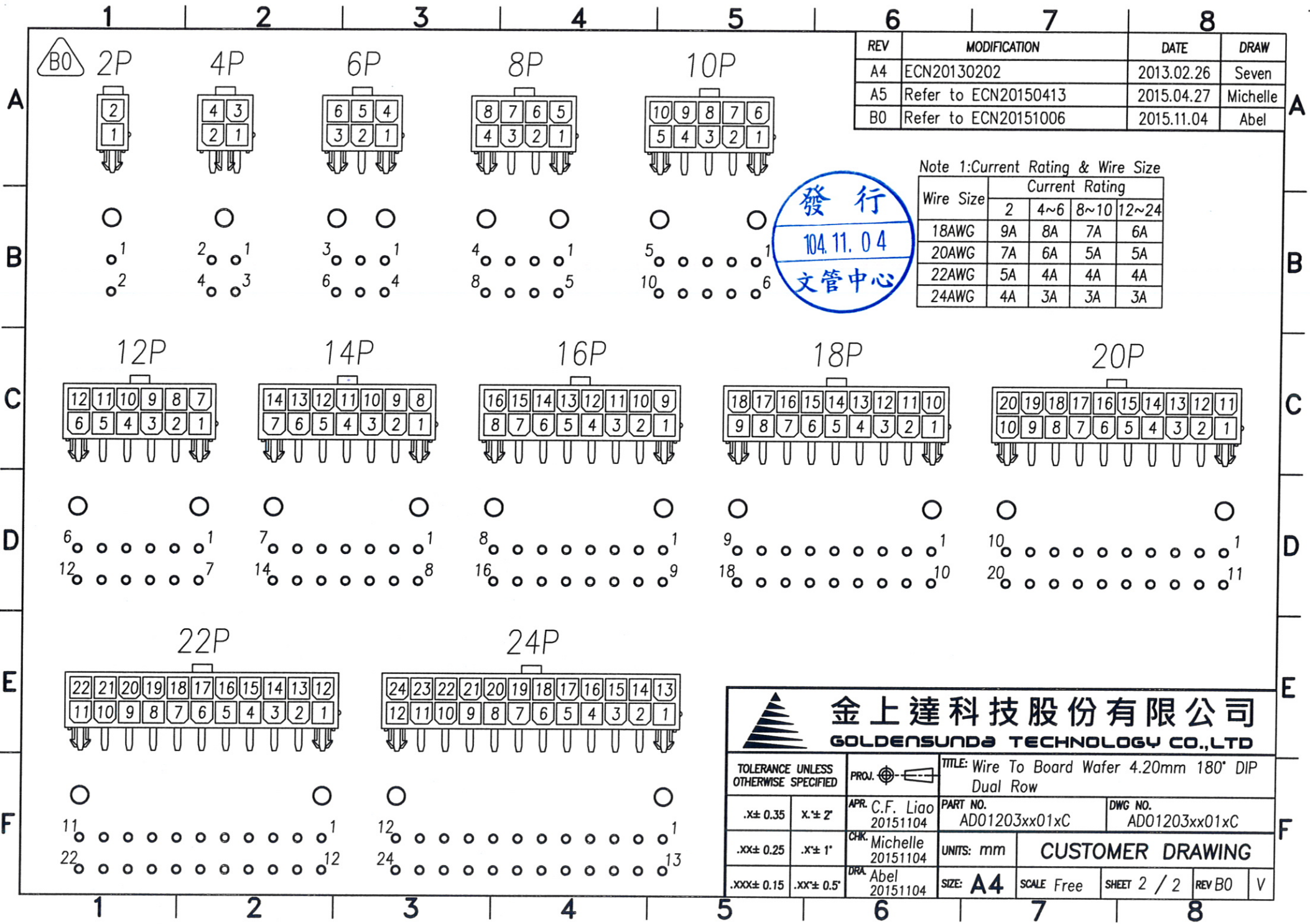
金上達科技股份有限公司
GOLDENSUNDA TECHNOLOGY CO.,LTD

TOLERANCE UNLESS OTHERWISE SPECIFIED

.X± 0.35	X.± 2'	PROJ.	TITLE: Wire To Board Wafer 4.20mm 180° DIP Dual Row
.XX± 0.25	.X± 1'	APR. C.F. Liao 20151104	PART NO. AD01203xx01xC
.XXX± 0.15	.XX± 0.5'	CHK Michelle 20151104	DWG NO. AD01203xx01xC
		DRA Abel 20151104	UNITS: mm

CUSTOMER DRAWING

SIZE: **A4** SCALE: Free SHEET 1 / 2 REV B0 V




REV	MODIFICATION	DATE	DRAW
A4	ECN20130202	2013.02.26	Seven
A5	Refer to ECN20150413	2015.04.27	Michelle
B0	Refer to ECN20151006	2015.11.04	Abel

Note 1: Current Rating & Wire Size

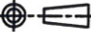
Wire Size	Current Rating			
	2	4~6	8~10	12~24
18AWG	9A	8A	7A	6A
20AWG	7A	6A	5A	5A
22AWG	5A	4A	4A	4A
24AWG	4A	3A	3A	3A





金上達科技股份有限公司

GOLDENSUND TECHNOLOGY CO.,LTD

TOLERANCE UNLESS OTHERWISE SPECIFIED		PROJ. 	TITLE: Wire To Board Wafer 4.20mm 180° DIP Dual Row	
.x± 0.35	x'± 2'	APR. C.F. Liao 20151104	PART NO. AD01203xx01xC	DWG NO. AD01203xx01xC
.xx± 0.25	.x'± 1'	CHK. Michelle 20151104	CUSTOMER DRAWING	
.xxx± 0.15	.xx'± 0.5'	DRA. Abel 20151104		
		UNITS: mm	SIZE: A4	SCALE: Free
		SHEET 2 / 2	REV B0	V