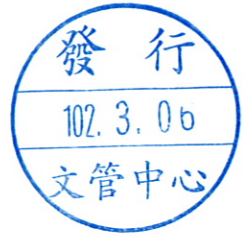


RoHS Compliant

REV	MODIFICATION	DATE	DRAW
A0	Release To Production	2009.11.05	Abel
A1	ECN20130202	2013.02.26	Seven



Specification

- 1.Current Rating:9A
- 2.Voltage Rating:600V AC/DC
- 3.Contact Resistance:10mΩ Max.
- 4.Insulation Resistance:1000MΩ Min. At DC 500V
- 5.Dielectric Withstanding Voltage:AC1500V/Minute
- 6.Operating Temperature:-25℃~+85℃

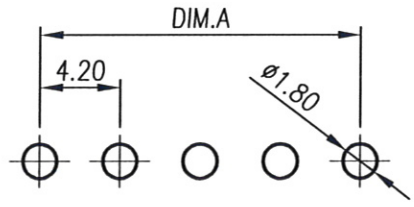
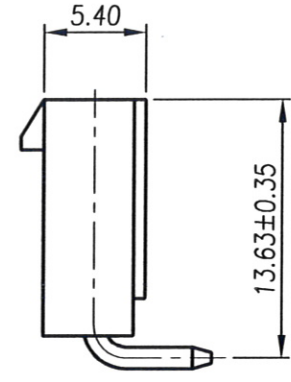
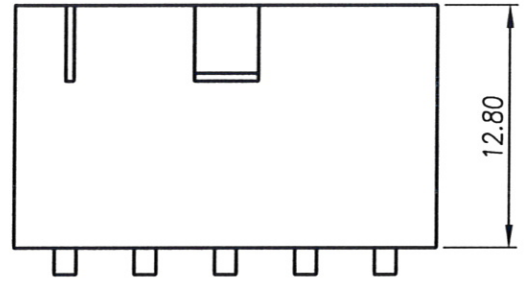
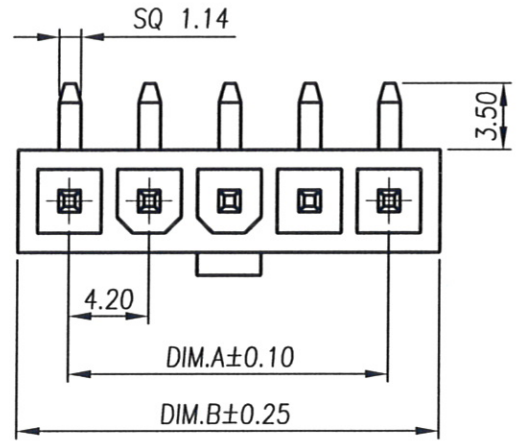
Material:

- 1.Housing:Thermoplastic UL94V-2
 - 2.Contact Pin:Copper Alloy SQ Pin=1.14mm
- Finish:**
- 1.Housing:Natural
 - 2.Contact Pin:Bright Tin Plated Over Nickel.

Part No.: AD01101 XX 0 1 5 C


Number of Pin 02~06 Packing 5:Bag

Housing Material 0:NY66 UL94V-2 Natural Plating 1:Bright Tin Plated Over Nickel.



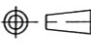
RECOMMENDED PCB LAYOUT
(Tolerance:±0.05)

PIN	DIM.A	DIM.B
02	4.20	9.60
03	8.40	13.80
04	12.60	18.00
05	16.80	22.20
06	21.00	26.40



金上達科技股份有限公司

GOLDENSUND TECHNOLOGY CO.,LTD

TOLERANCE UNLESS OTHERWISE SPECIFIED		PROJ. 	TITLE: Wire To Board Wafer 4.2mm 180° Single Row DIP	
.x± 0.35	x.'± 2'	APR. Jay 20130226	PART NO. AD01101XX015C	DWG NO. AD01101XX015C
.xx± 0.25	.x'± 1'	CHK: Michelle 20130226	CUSTOMER DRAWING	
.xxx± 0.15	.xx'± 0.5'	DRA. Seven 20130226		
		UNITS: mm	SCALE 2.5:1	SHEET 1 / 1
		SIZE: A4	REV A1	V