



RoHS Compliant



REV	MODIFICATION	DATE	DRAW
A0	Release To Production	2009.10.15	Abel
A1	ECN20110906	2011.10.04	Ivy
A2	ECN20130202	2013.02.26	Seven

Specification

- 1.Current Rating:5A
- 2.Voltage Rating:250V AC/DC
- 3.Contact Resistance:20mΩ Max.
- 4.Insulation Resistance:1000MΩ Min. At DC 500V
- 5.Dielectric Withstanding Voltage:AC1500V/Minute
- 6.Operating Temperature:-25℃~+85℃

Material:

- 1.Housing:Thermoplastic UL94V-2
- 2.Contact Pin:Copper Alloy SQ PIN=1.14mm

Finish:

- 1.Housing:Natural
- 2.Contact Pin:Bright Tin Plated Over Nickel.

Part No.: AD00117 XX 0 1 5 2

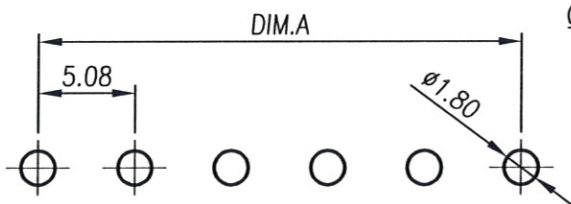
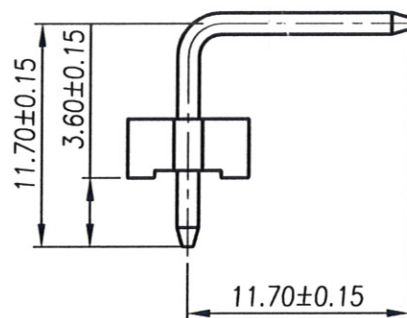
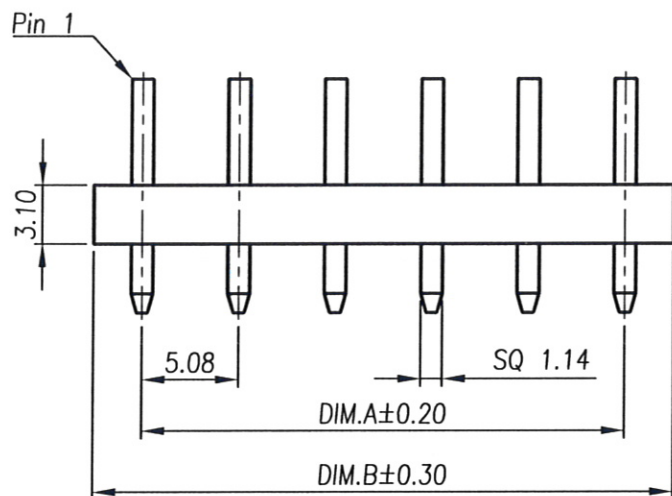
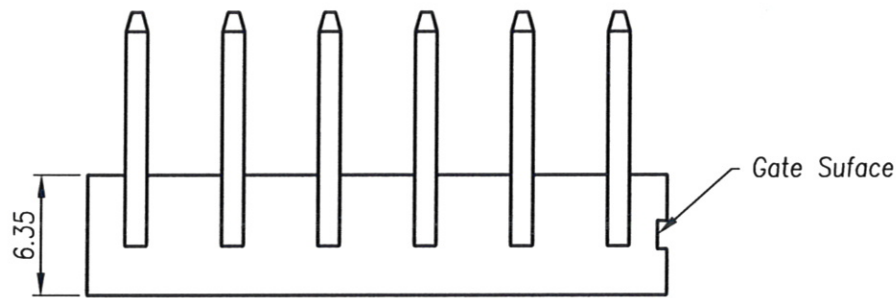
Number of Pin Packing 5:Bag

02~10

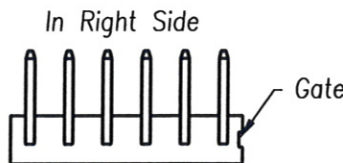
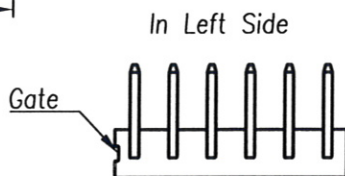
Housing Material Plating

0:NY66 UL94V-2 Natural 1:Bright Tin Plated Over Nickel.


PIN	DIM.A	DIM.B	PIN	DIM.A	DIM.B
02	5.08	10.16	07	30.48	35.56
03	10.16	15.24	08	35.56	40.64
04	15.24	20.32	09	40.64	45.72
05	20.32	25.40	10	45.72	50.80
06	25.40	30.48			



RECOMMENDED PCB LAYOUT
(Tolerance:±0.05)

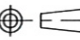


Gate Reference Appearance



金上達科技股份有限公司

GOLDENSUNDA TECHNOLOGY CO.,LTD

TOLERANCE UNLESS OTHERWISE SPECIFIED		PROJ. 	TITLE: Wire To Board Wafer 5.08mm 90° DIP	
.x± 0.35	x.± 2'	APR. Jay 20130226	PART NO. AD00117XX0152	DWG NO. AD00117XX0152
.xx± 0.25	.x'± 1'	CHK. Michelle 20130226	UNITS: mm	CUSTOMER DRAWING
.xxx± 0.15	.xx'± 0.5'	DRA. Seven 20130226	SIZE: A4	
		SCALE 2.5:1	SHEET 1 / 1	REV A2