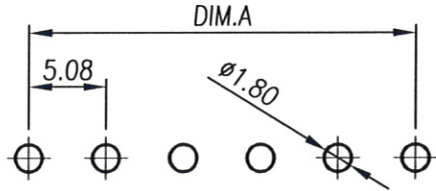
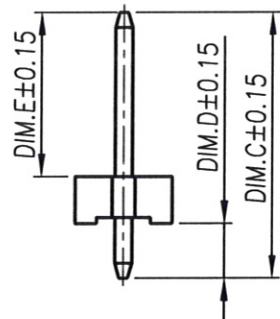
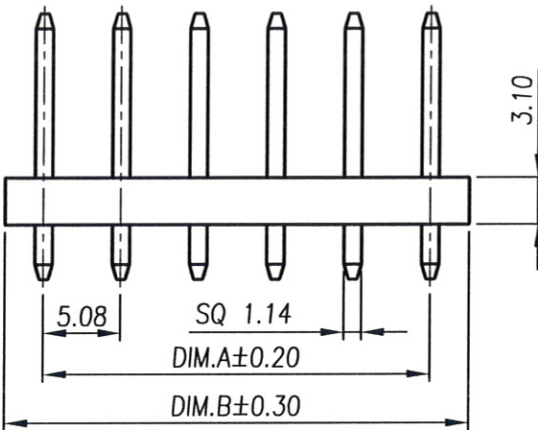




RoHS Compliant

REV	MODIFICATION	DATE	DRAW
A0	Release To Production	2009.07.27	Abel
A1	ECN20110905	2011.09.29	Ivy
A2	ECN20130202	2013.02.26	Seven



RECOMMENDED PCB LAYOUT
(Tolerance:±0.05)

Specification

- 1.Current Rating:5A
- 2.Voltage Rating:250V AC/DC
- 3.Contact Resistance:20mΩ Max.
- 4.Insulation Resistance:1000MΩ Min. At DC 500V
- 5.Dielectric Withstanding Voltage:AC1500V/Minute
- 6.Operating Temperature:-25℃~+85℃

Material:

- 1.Housing:Thermoplastic UL94V-2
- 2.Contact Pin:Copper Alloy SQ PIN=1.14mm

Finish:

- 1.Housing:Natural
- 2.Contact Pin:Bright Tin Plated Over Nickel.

Part No.:AD001 XX XX 0 1 5 2

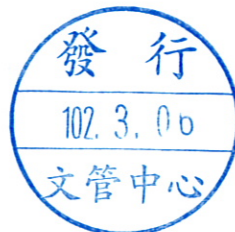
Series

Series	DIM.C	DIM.D	DIM.E
16	17.50	3.60	10.80
42	19.00	3.90	12.00

Number of Pin
02~10

- Packing
5:Bag
- Plating
1:Bright Tin Plated Over Nickel.
- Housing Material
0:NY66 UL94V-2 Natural

PIN	DIM.A	DIM.B	PIN	DIM.A	DIM.B
02	5.08	10.16	07	30.48	35.56
03	10.16	15.24	08	35.56	40.64
04	15.24	20.32	09	40.64	45.72
05	20.32	25.40	10	45.72	50.80
06	25.40	30.48			



金上達科技股份有限公司

GOLDENSUND TECHNOLOGY CO.,LTD

TOLERANCE UNLESS OTHERWISE SPECIFIED		PROJ.	TITLE: Wire To Board Wafer 5.08mm 180° DIP			
.x± 0.35	.x'± 2'	APR. Jay 20130226	PART NO. AD001XXXX0152		DWG NO. AD001XXXX0152	
.xx± 0.25	.x'± 1'	CHK. Michelle 20130226	UNITS: mm	CUSTOMER DRAWING		
.xxx± 0.15	.xx'± 0.5'	DRA. Seven 20130226	SIZE: A4	SCALE 2:1	SHEET 1 / 1	
				REV A2	V	