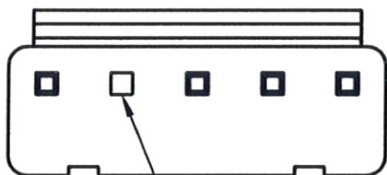
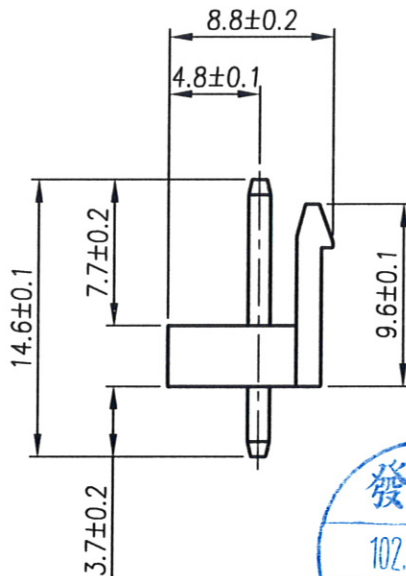
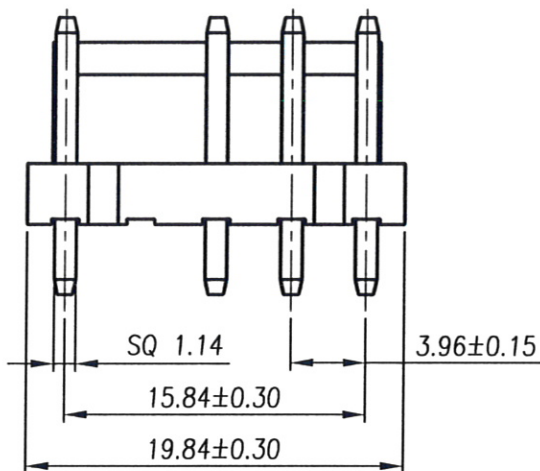


RoHS Compliant

REV	MODIFICATION	DATE	DRAW
A0	Release To Production	2009.02.06	Abel
A1	Release To ECN20130208	2013.03.07	Seven



Void Pin2



Specification

- 1.Current Rating:7A
- 2.Voltage Rating:250V AC/DC
- 3.Contact Resistance:10mΩ Max.
- 4.Insulation Resistance:1000MΩ Min. At DC 500V
- 5.Dielectric Withstanding Voltage:1500 VAC/Minute
- 6.Operating Temperature:-25℃~+85℃

Material:

- 1.Housing:Thermoplastic UL94V-0
- 2.Contact Pin:Copper Alloy SQ Pin=1.14mm

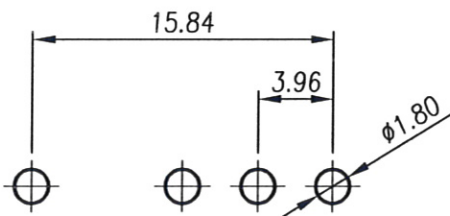
Finish:

- 1.Housing:Natural
- 2.Contact Pin:Bright Tin Plated Over Ni

Part No.: AD02226 05 1 1 5 2

Number of Pin 05 Packing 5:Bag

Housing Material 1:NY66 UL94V-0 Natural Plating 1:Bright Tin Plated Over Ni



RECOMMENDED PCB LAYOUT
(Tolerance±0.10)

TOLERANCE UNLESS OTHERWISE SPECIFIED		PROJ.	TITLE: Wire To Board Wafer 3.96mm 180° DIP 5P Void Pin2		
			PART NO. AD02226051152		DWG NO. AD02226051152
.x± 0.35	.x'± 2'	APR. Jay 20130227	UNITS: mm CUSTOMER DRAWING		
.xx± 0.25	.x'± 1'	CHK. Michelle 20130227			
.xxx± 0.15	.xx'± 0.5'	DRA. Seven 20130227			
		SIZE: A4	SCALE 2.5:1	SHEET 1 / 1	REV A1 V