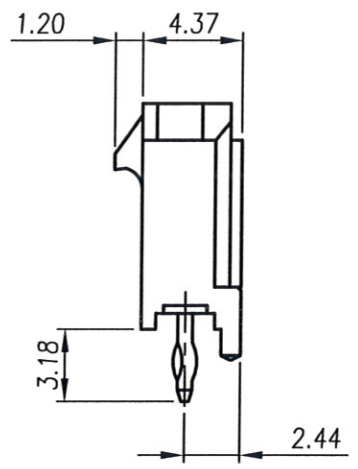
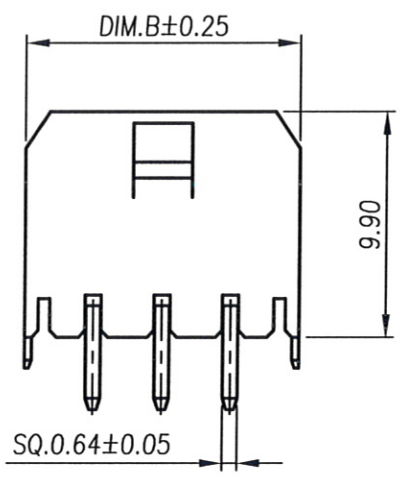
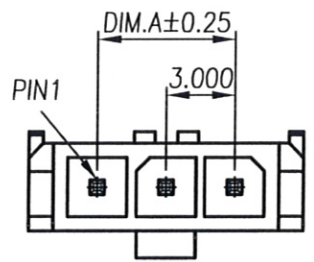


RoHS Compliant



REV	MODIFICATION	DATE	DRAW
A0	Release To MA20150602	2015.06.08	Michelle



Specification
 1.Current Rating:See Note1
 2.Voltage Rating:250V AC/DC
 3.Contact Resistance:10mΩ Max.
 4.Insulation Resistance:1000MΩ Min. At DC 500V
 5.Dielectric Withstanding Voltage:AC1500V/Minute
 6.Operating Temperature:-25°C~+85°C

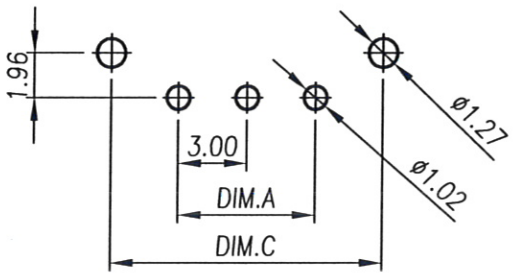
Material:
 1.Housing:High Temperature Thermoplastic UL94V-0
 2.Contact Pin:Copper Alloy SQ. Pin 0.64mm

Finish:
 1.Housing:Black
 2.Contact Pin:Bright Tin Plated Over Nickel

Part No.: AD03102 XX 6 1 5 Q
 No. Of Pin 02~12 Packing 5:Bag
 Housing Material 6:LCP 94V-0 Black Plating 1:Bright Tin Plated Over Nickel


Note1: Wire Size And Current Rating

Wire Size	#20	#22	#24	#26	#28	#30
Ampere	5A	5A	4A	3A	2A	1A



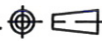
RECOMMENDED P.C.B LAYOUT

PIN	DIM.A	DIM.B	DIM.C
02	3.00	9.65	8.90
03	6.00	12.65	11.90
04	9.00	15.65	14.90
05	12.00	18.65	17.90
06	15.00	21.65	20.90
07	18.00	24.65	23.90
08	21.00	27.65	26.90
09	24.00	30.65	29.90
10	27.00	33.65	32.90
11	30.00	36.65	35.90
12	33.00	39.65	38.90



金上達科技股份有限公司

GOLDENSUNDA TECHNOLOGY CO.,LTD

TOLERANCE UNLESS OTHERWISE SPECIFIED		PROJ. 	TITLE: Wire To Board Wafer 3.00mm 180° DIP Single Row			
.x± 0.35	x.*± 2'	APR. C.F.Liao 20150608	PART NO. AD03102XX615Q		DWG NO. AD03102XX615Q	
.xx± 0.25	.x.*± 1'	CHK. Abel 20150608	UNITS: mm	CUSTOMER DRAWING		
.xxx± 0.15	.xx.*± 0.5'	DRA. Michelle 20150608	SIZE: A4	SCALE 3:1	SHEET 1 / 1	
			REV A0	V		