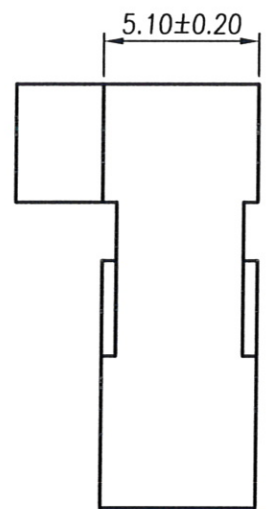


△<sub>A3</sub> DIM.A & DIM.B TOLERANCE:  
 2x2Pin ~ 2x10Pin => ±0.20  
 2x11Pin ~ 2x20Pin => ±0.25  
 2x21Pin ~ 2x30Pin => ±0.35  
 2x31Pin ~ 2x50Pin => ±0.45



REV	MODIFICATION	DATE	DRAW
A1	Release To ECN20120701	2012.07.04	Michelle
A2	Release To ECN20120704	2012.07.20	Michelle
A3	Release To ECN20151005	2015.10.12	Michelle

**RoHS Compliant**

Specification  
 1.Current Rating:3A  
 2.Voltage Rating:250V AC  
 3.Contact Resistance:20mΩ Max.  
 4.Insulation Resistance:1000MΩ Min. At DC 500V  
 5.Dielectric Withstanding Voltage:AC800V/Minute  
 6.Operating Temperature:-25°C~+85°C

Material:  
 1.Housing:Thermoplastic UL94V-1

Finish:  
 1.Housing:Black


Part No.:BC03911 XX G 3 B 8

△<sub>A3</sub> No. Of Pin  
 04~100(=A0)  
 Packing  
 B:Bag

Housing Material  
 G:Noryl UL94V-1  
 Housing Color  
 3:Black



PIN	DIM.A	DIM.B	PIN	DIM.A	DIM.B	PIN	DIM.A	DIM.B	PIN	DIM.A	DIM.B
2X2	2.54	5.08	2X12	27.94	30.48	2X22	53.34	55.88	2X32	78.74	81.28
2X3	5.08	7.62	2X13	30.48	33.02	2X23	55.88	58.42	2X33	81.28	83.82
2X4	7.62	10.16	2X14	33.02	35.56	2X24	58.42	60.96	2X34	83.82	86.36
2X5	10.16	12.70	2X15	35.56	38.10	2X25	60.96	63.50	2X35	86.36	88.90
2X6	12.70	15.24	2X16	38.10	40.64	2X26	63.50	66.04	2X36	88.90	91.44
2X7	15.24	17.78	2X17	40.64	43.18	2X27	66.04	68.58	2X37	91.44	93.98
2X8	17.78	20.32	2X18	43.18	45.72	2X28	68.58	71.12	2X38	93.98	96.52
2X9	20.32	22.86	2X19	45.72	48.26	2X29	71.12	73.66	2X39	96.52	99.06
2X10	22.86	25.40	2X20	48.26	50.80	2X30	73.66	76.20	2X40	99.06	101.60
2X11	25.40	27.94	2X21	50.80	53.34	2X31	76.20	78.74	2X50	124.46	127.00



## 金上達科技股份有限公司

GOLDENSUNDA TECHNOLOGY CO.,LTD

TOLERANCE UNLESS OTHERWISE SPECIFIED		PROJ.	TITLE: Wire To Board Housing 2.54mm Dual Rows 有鼻		
.x± 0.35	x:± 2'	APR. C.F.Liao 20151012	PART NO. BC03911XXG3B8	DWG NO. BC03911XXG3B8	
.xx± 0.25	.x:± 1'	CHK. Abel 20151012	UNITS: mm	CUSTOMER DRAWING	
.xxx± 0.15	.xx:± 0.5'	DRA. Michelle 20151012	SIZE: <b>A4</b>	SCALE 4:1	SHEET 1 / 1
			REV A3	V	