

1 2 3 4 5 6 7 8

REV	MODIFICATION	DATE	DRAW
A0	Release To ECN20140206	2014.02.21	Michelle

A

B

C

D

E

F

A

B

C

D

E

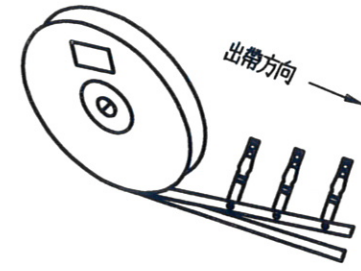
F

RoHS Compliant

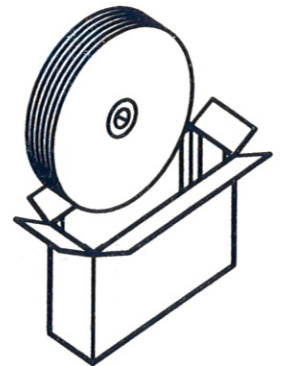
Part No.: CC0370000B 1 A5

Plating
1: Bright Tin Plated Over Nickel All

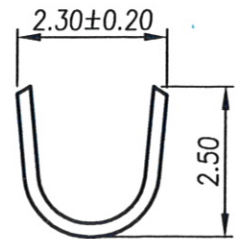
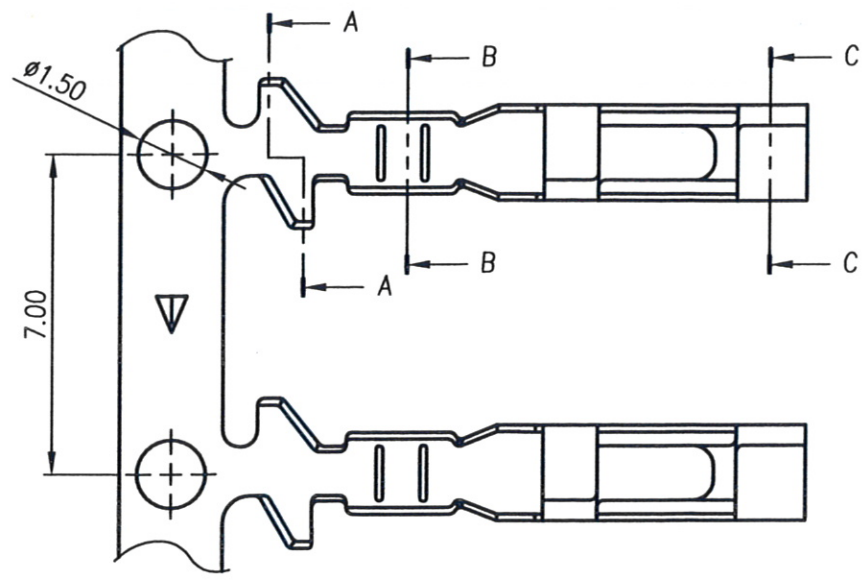
捲料方向：如圖收捲料



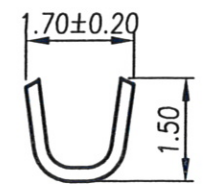
夾線面朝外，料帶朝內



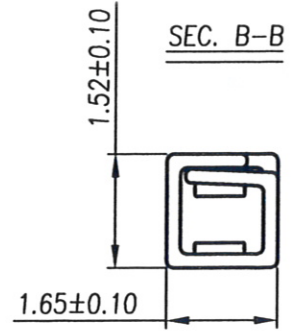
10R/Cartron
=100,000Pcs/Cartron



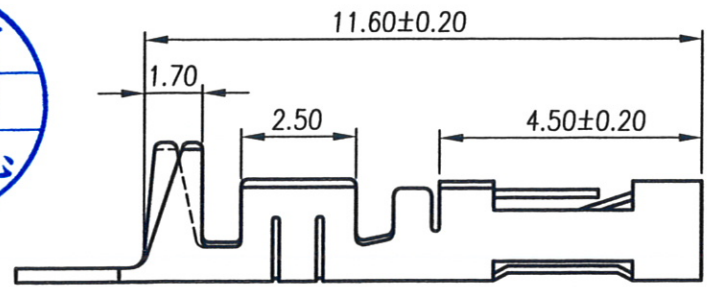
SEC. A-A



SEC. B-B



SEC. C-C



發行
103. 2. 21
文管中心

Specifications & Ordering Information:

Part No	Thickness	Material	Wire Range	Insulation O.D.
CC0370000B1A5	0.20mm	Brass	AWG #22~28	1.6~1.2mm

Finish	Qty/reel	Use With(Housing)
Tin Plated	10,000PCS	BC03700XXG3B8

金上達科技股份有限公司
GOLDENSUNDA TECHNOLOGY CO.,LTD

TOLERANCE UNLESS OTHERWISE SPECIFIED		PROJ.	TITLE: Wire To Board Terminal 2.54mm			
.x± 0.35	.x'± 2'	APR. Jefferson 20140221	PART NO. CC0370000B1A5	DWG NO. CC0370000B1A5		
.xx± 0.25	.x'± 1'	CHK. Abel 20140221	UNITS: mm	CUSTOMER DRAWING		
.xxx± 0.15	.xx'± 0.5'	DRAW. Michelle 20140221	SIZE: A4	SCALE 6:1	SHEET 1 / 1	
			REV A0	V		

1 2 3 4 5 6 7 8