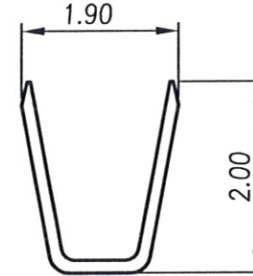
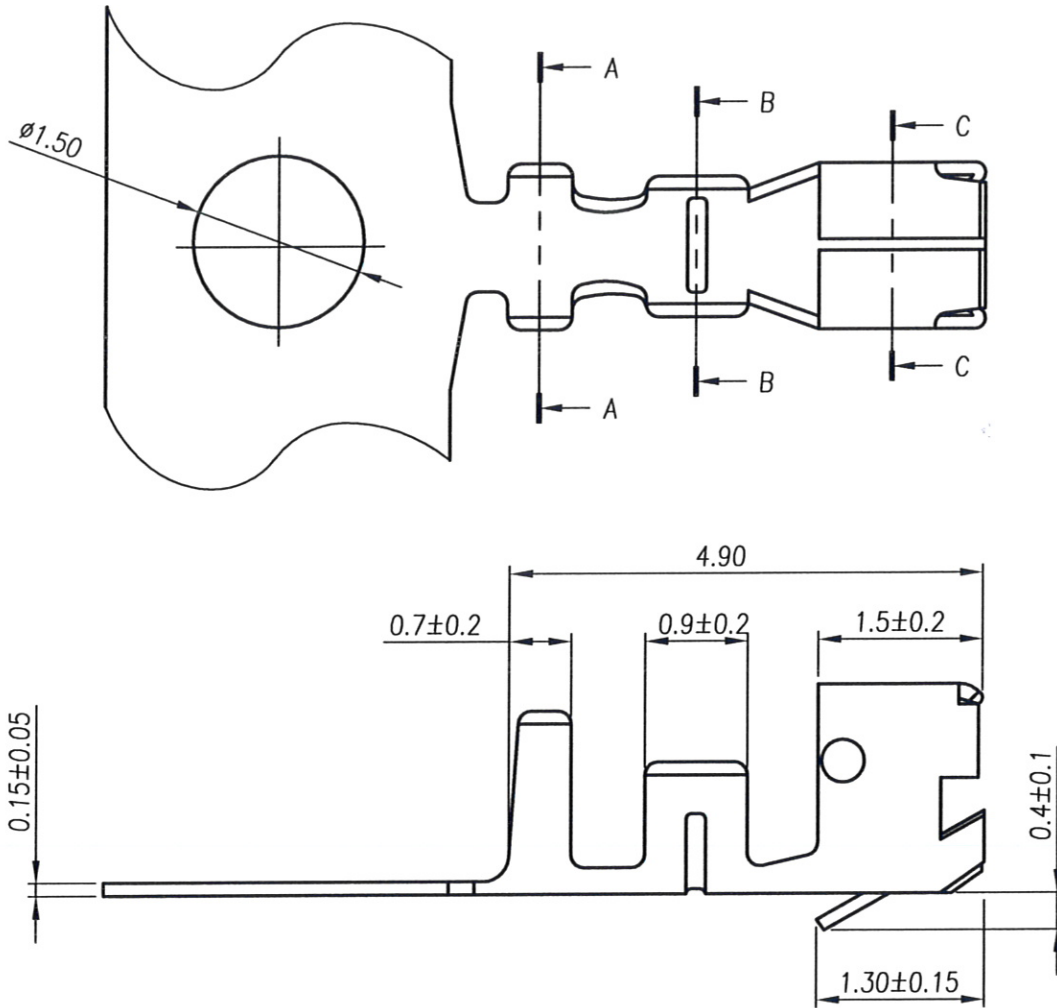


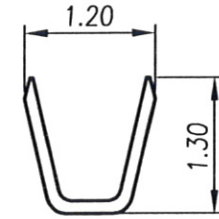


RoHS Compliant

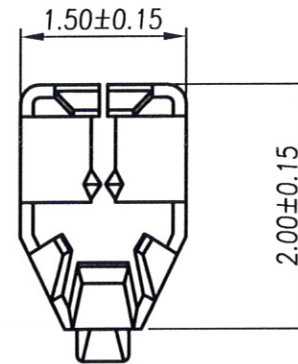
REV	MODIFICATION	DATE	DRAW
A0	Release To Production	2010.02.03	AJ
A1	Release To ECN20130313	2013.03.29	Seven



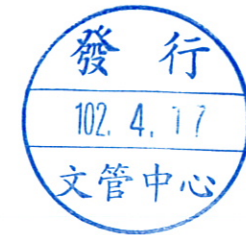
SEC. A-A



SEC. B-B



SEC. C-C

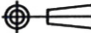


Specifications & Ordering Information:

Part No	Thickness	Material	Wire Range
CCA120000P1A6	0.15mm	Phosphor Bronze	AWG #24~30

Insulation O.D.	Finish	Qty/reel	Use With
1.13~1.40mm	Bright Tin	10,000PCS	BCA1200XX12B3

 **金上達科技股份有限公司**  
GOLDENSUNDA TECHNOLOGY CO.,LTD

TOLERANCE UNLESS OTHERWISE SPECIFIED		PROJ. 	TITLE: Wire To Board Terminal 2.00mm Female		
.x± 0.35	x.± 2'	APR. Jay 20130329	PART NO. CCA120000P1A6	DWG NO. CCA120000P1A6	
.xx± 0.25	.x± 1'	CHK. Michelle 20130329	UNITS: mm	CUSTOMER DRAWING	
.xxx± 0.15	.xx± 0.5'	DRA. Seven 20130329	SIZE: <b>A4</b>	SCALE 15:1	SHEET 1 / 1 REV A1 V