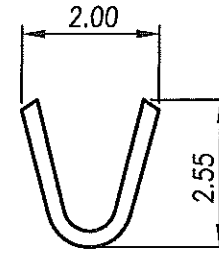
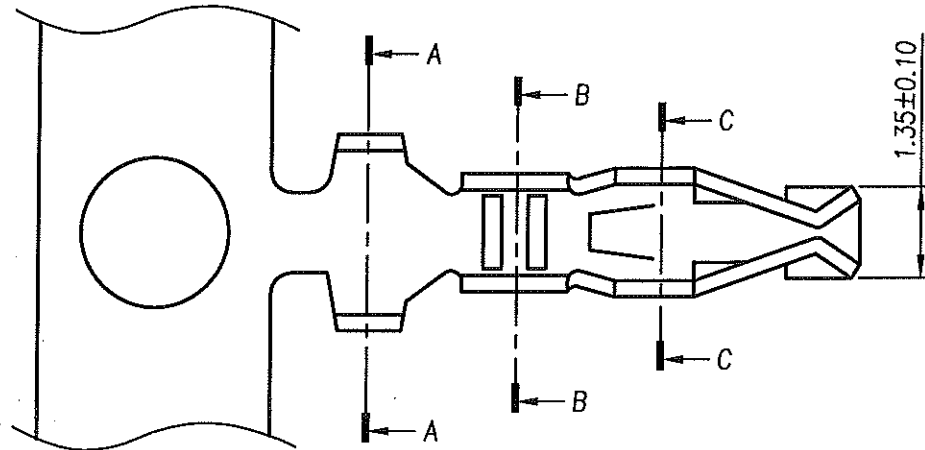


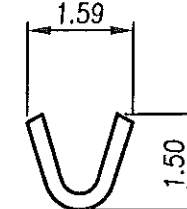
RoHS Compliant



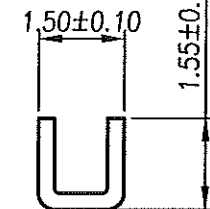
REV	MODIFICATION	DATE	DRAW
A1	Release To ECN20130313	2013.03.29	Seven
A2	Release To ECN20150318	2015.03.30	Michelle
A3	Release To ECN20150501	2015.05.06	Michelle



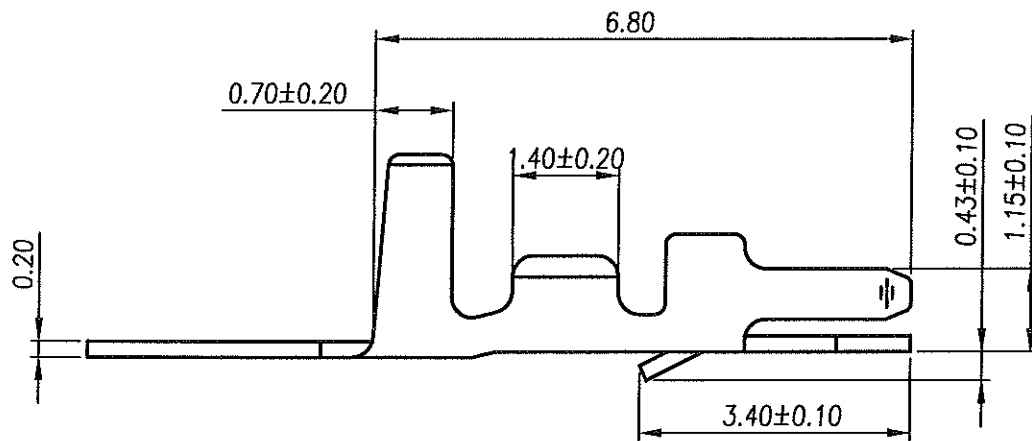
SEC. A-A



SEC. B-B

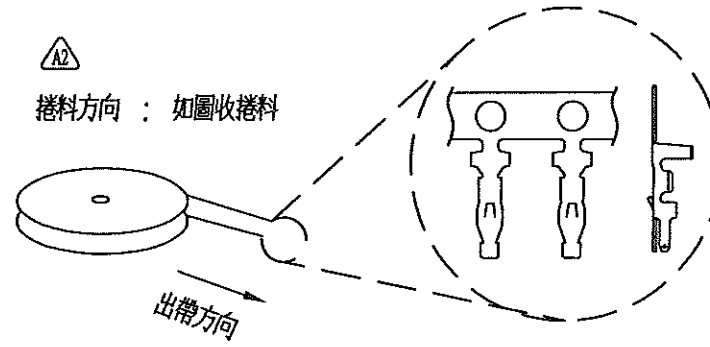


SEC. A-A



△_{A2} PART NO.:
CC0580000P X A 2
Plating
1: Bright Tin
3: Gold Flash

△_{A2} 捲料方向：如圖收捲料



出帶方向

夾線面朝外，料帶朝上



Specifications & Ordering Information: △_{A2}

Part No	Thickness	Material	Wire Range	Insulation O.D.
CC0580000PXA2	0.20mm	Phosphor Bronze	AWG #22~28	

Finish	Qty/reel	Use With(Housing) △ _{A3}
See P/N	10,000PCS	BC05800XX11B1 & BC06400XX12B2

金上達科技股份有限公司
GOLDENSUNDA TECHNOLOGY CO.,LTD

TOLERANCE UNLESS OTHERWISE SPECIFIED		PROJ.	TITLE: Wire To Board Terminal 2.00mm Female		
.X± 0.35	.X'± 2'	APR. C.F.Liao 20150506	PART NO. CC0580000PXA2	DWG NO. CC0580000PXA2	
.XX± 0.25	.X'± 1'	CHK. Abel 20150506	UNITS: mm	CUSTOMER DRAWING	
.XXX± 0.15	.XX'± 0.5'	DRA. Michelle 20150506	SIZE: A4	SCALE 10:1	SHEET 1 / 1
				REV A3	V