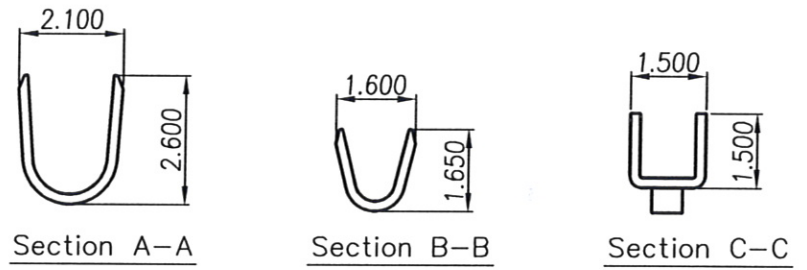
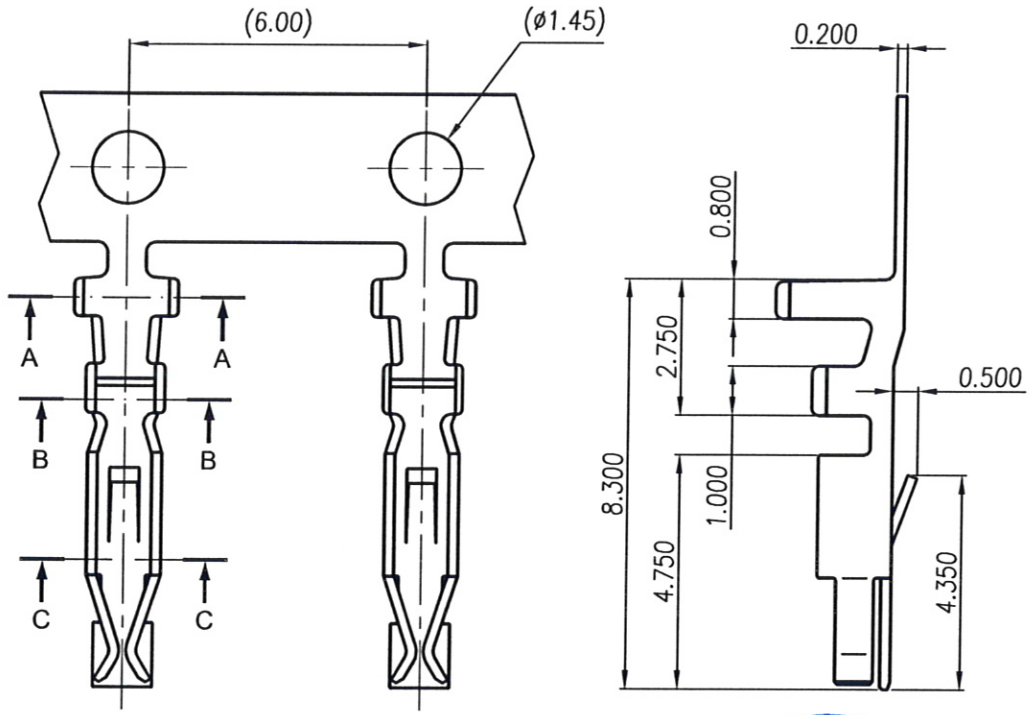
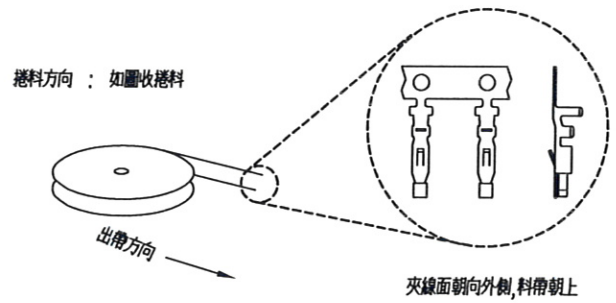


| REV | MODIFICATION | DATE | DRAW |
|-----|---------------------|------------|------|
| A0 | Refer to MA20150507 | 2015.08.06 | Abel |
| | | | |



Part No.: CC0260000P 1 A4
 Plating
 1: Bright Tin Plated



發行
 104.8.06
 文管中心

Specifications & Order Information:

| P/N | Thickness | Material | Wire Range | Insulation O.D. |
|---------------|-----------|----------------------|------------|-----------------|
| CC0260000P1A4 | 0.20mm | Phosphor Bronze | AWG #24~28 | 1.70mm Max. |
| Finish | Q'ty/Reel | Mates With (Housing) | | |
| Bright Tin | 10,000pcs | BC026000212B3 | | |

金上達科技股份有限公司
GOLDENSUNDA TECHNOLOGY CO.,LTD

| | | | | |
|--------------------------------------|-------------|--|---------------------------|--------------------------|
| TOLERANCE UNLESS OTHERWISE SPECIFIED | PROJ. | TITLE: Wire To Board & Wire Terminal 3.50mm Female | | |
| .x± 0.35 | x.*± 2' | APR. C.F. Liao 20150806 | PART NO. CC0260000P1A4 | DWG NO. CC0260000P1A4 |
| .xx± 0.25 | .x.*± 1' | CHK. Michelle 20150806 | UNITS: mm | CUSTOMER DRAWING |
| .xxx± 0.15 | .xx.*± 0.5' | DRA. Abel 20150806 | SIZE: A4 | SCALE 20:3 |
| | | SHEET 1 / 1 | | REV A0 V |