



RoHS Compliant

REV	MODIFICATION	DATE	DRAW
A0	Release To Production	2009.10.27	Abel
A1	Modify PCB Layout	2010.01.29	Abel
A2	Release To ECN20130304	2013.03.20	Seven

Specification

- 1.Current Rating:1A AC/DC
- 2.Voltage Rating:150V AC/DC
- 3.Contact Resistance:30mΩ Max.
- 4.Insulation Resistance:500MΩ Min.
- 5.Withstand Voltage:500V AC/Minute
- 6.Operating Temperature:-35°C~+85°C

Material:

- 1.Housing:High Temp. Thermoplastic UL94V-0
- 2.Contact:Copper Alloy
- 3.Tab:Copper Alloy

Finish:

- 1.Housing:Natural
- 2.Contact:See P/N Option
- 3.Tab:Tin Plated

Part No.: AS07702 XX 5 5 X 9

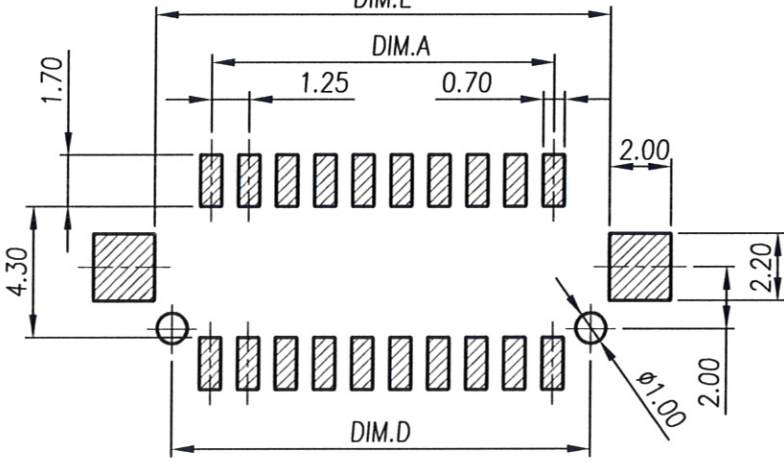
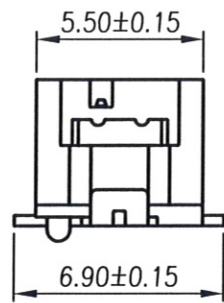
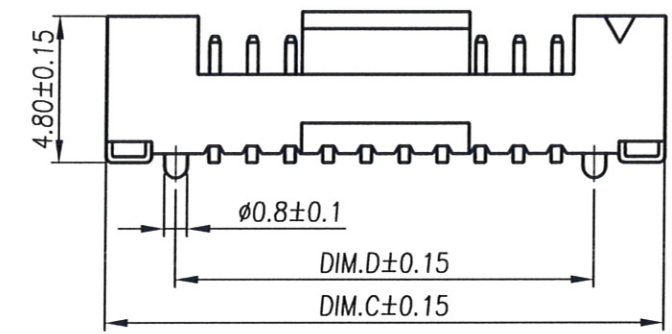
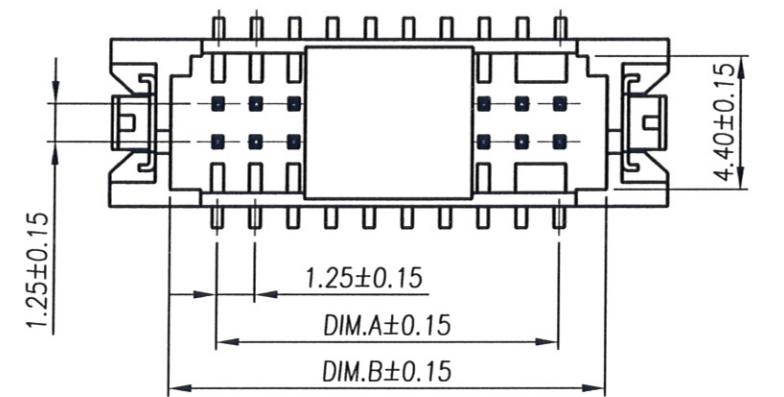
Number of Pin 10~40

Packing
0:T&R With CAP
3:Tube With CAP

Housing Material 5:NY6T UL94V-0 Natural

Plating
5:Gold Flash On Contact Area.
Tin Plated On Solder Tail

Pin	DIM.A	DIM.B	DIM.C	DIM.D	DIM.E
10(2x05)	5.00	8.10	12.10	7.50	8.70
20(2x10)	11.25	14.35	18.35	13.75	14.95
30(2x15)	17.50	20.60	24.60	20.00	21.20
40(2x20)	23.75	26.85	30.85	26.25	27.45



Recommended PCB Layout
(Tolerance±0.05)

金上達科技股份有限公司
GOLDENSUNDA TECHNOLOGY CO.,LTD

TOLERANCE UNLESS OTHERWISE SPECIFIED		PROJ.	TITLE: Wire To Board Wafer 1.25mm 180° SMT W/Post	
.x± 0.35	x.'± 2'	APR. Jay 20130320	PART NO. AS07702XX55X9	DWG NO. AS07702XX55X9
.xx± 0.25	.x'± 1'	CHK. Michelle 20130320	UNITS: mm	
.xxx± 0.15	.xx'± 0.5'	DRA. Seven 20130320	SIZE: A4	
			SCALE 4:1	SHEET 1 / 1
			REV A2	V

CUSTOMER DRAWING