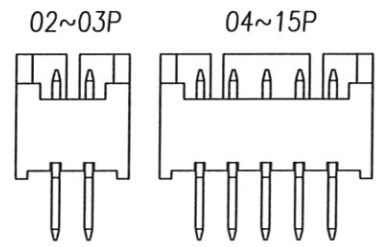
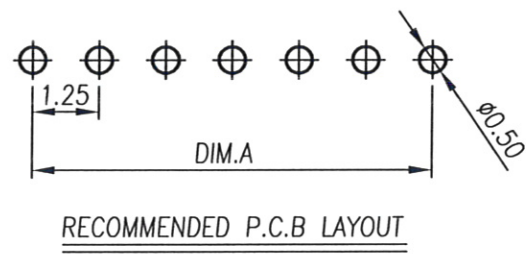
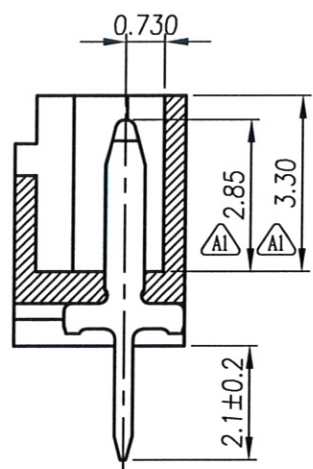
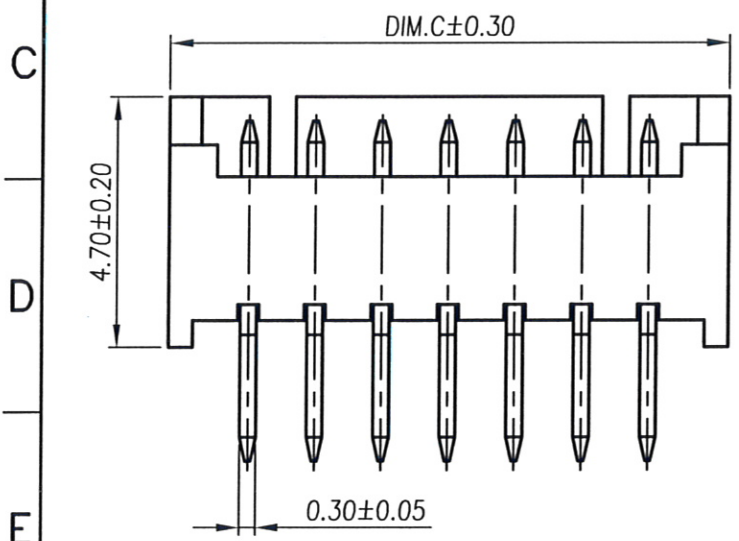


PIN	DIM.A	DIM.B	DIM.C
02	1.25	3.05	4.25
03	2.50	4.30	5.50
04	3.75	5.55	6.75
05	5.00	6.80	8.00
06	6.25	8.05	9.25
07	7.50	9.30	10.50
08	8.75	10.55	11.75
09	10.00	11.80	13.00
10	11.25	13.05	14.25
11	12.50	14.30	15.50
12	13.75	15.55	16.75
13	15.00	16.80	18.00
14	16.25	18.05	19.25
15	17.50	19.30	20.50



REV	MODIFICATION	DATE	DRAW
A0	Release To ECN20150111	2015.01.26	Michelle
A1	Release To ECN20150702	2015.07.13	Michelle

RoHS Compliant

Specification
 1.Current Rating:1A AC/DC
 2.Voltage Rating:125V AC
 3.Contact Resistance:20mΩ Max.(Initial) 40mΩ Max.(Final)
 4.Insulation Resistance:100MΩ Min. At DC500V
 5.Dielectric Withstanding Voltage:AC250V/Minute
 6.Operating Temperature:-25°C~+85°C


Material:
 1.Housing:High Temperature Thermoplastic UL94V-0
 2.Contact Pin:Copper Alloy T=0.30mm
 Finish:

1.Housing:See P/O Option
 2.Contact Pin:See P/N Option
 Part No.: AD07600 XX X X 7 1

No. Of Pin: 02~15
 Packing: 7:Box
 Plating:

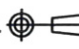
Housing Material:
 P:HTN UL94V-0 Natural H.F Dye Blue
 Q:HTN UL94V-0 Natural H.F Dye Black
 V:HTN UL94V-0 Natural H.F Dye Red
 2:Matte Tin Plated Over Ni
 3:Gold Flash Over Ni





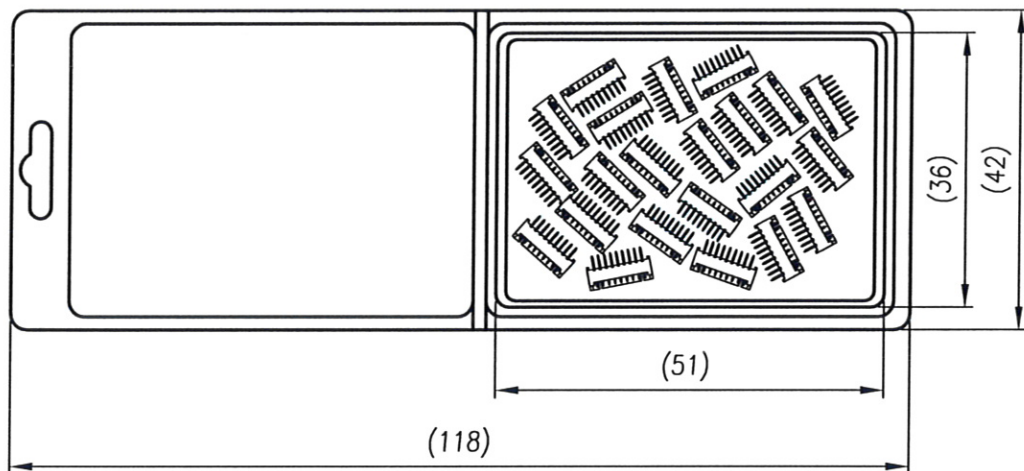
金上達科技股份有限公司

GOLDENSUND TECHNOLOGY CO.,LTD

TOLERANCE UNLESS OTHERWISE SPECIFIED		PROJ. 	TITLE: Wire To Board Wafer 1.25mm 180° DIP Single Row For Dye Color	
.x± 0.35	x.*± 2'	APR. C.F.Liao 20150713	PART NO. AD07600XXXX71	DWG NO. AD07600XXXX71
.xx± 0.25	.x.*± 1'	CHK. Abel 20150713	UNITS: mm	CUSTOMER DRAWING
.xxx± 0.15	.xx.*± 0.5'	DRA. Michelle 20150713	SIZE: A4	SCALE 7:1
		SHEET 1 / 2		REV A1

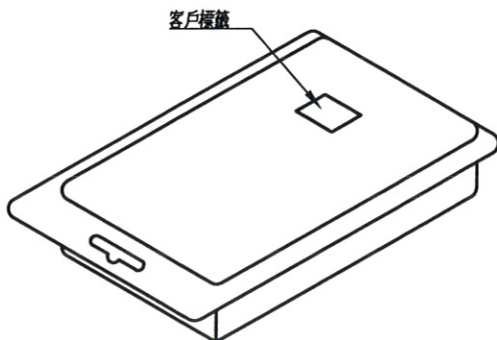
RoHS Compliant

REV	MODIFICATION	DATE	DRAW
A0	Release To ECN20150111	2015.01.26	Michelle
A1	Release To ECN20150702	2015.07.13	Michelle



每盒包裝數量,參考下列:

PIN數	數量
02 ~ 04	1000
05 ~ 06	600
07 ~ 08	500
09 ~ 10	400
11 ~ 12	300
13 ~ 15	200



金上達科技股份有限公司
GOLDENSUNDA TECHNOLOGY CO.,LTD

TOLERANCE UNLESS OTHERWISE SPECIFIED		PROJ.	TITLE: Wire To Board Wafer 1.25mm 180° DIP Single Row For Dye Color	
.x± 0.35	x.± 2'	APR. C.F.Liao 20150713	PART NO. AD07600XXXX71	DWG NO. AD07600XXXX71
.xx± 0.25	.x'± 1'	CHK. Abel 20150713	UNITS: mm	CUSTOMER DRAWING
.xxx± 0.15	.xx'± 0.5'	DRA. Michelle 20150713	SIZE: A4	SCALE Free
		SHEET 2 / 2		REV A1