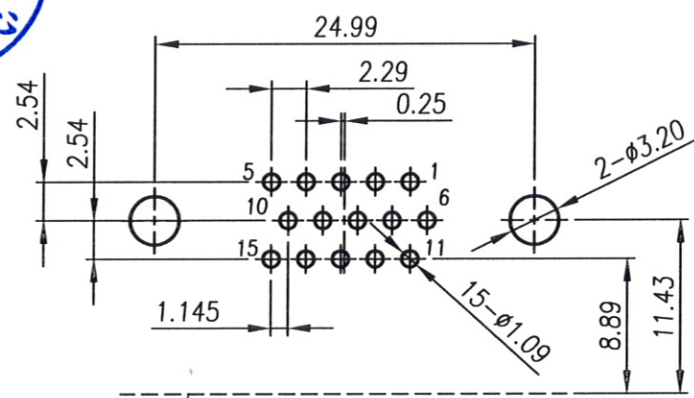
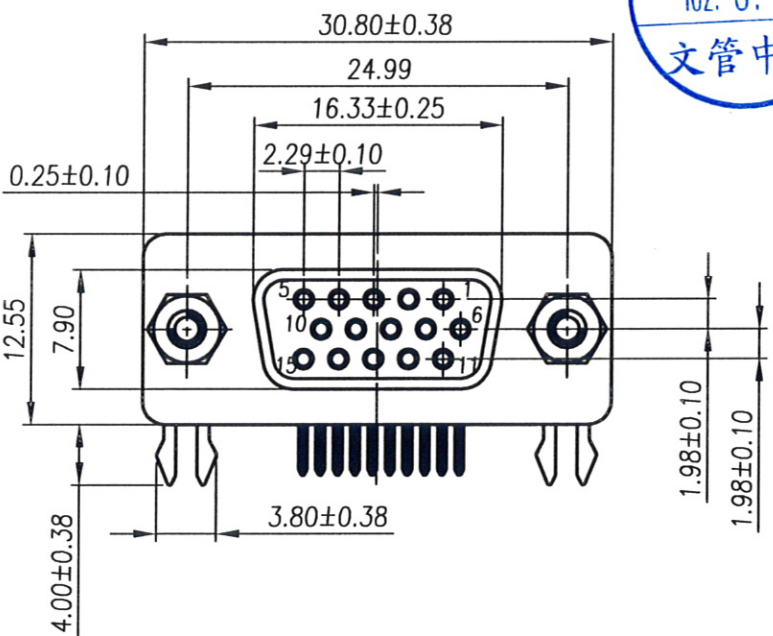


發行
102.6.06
文管中心

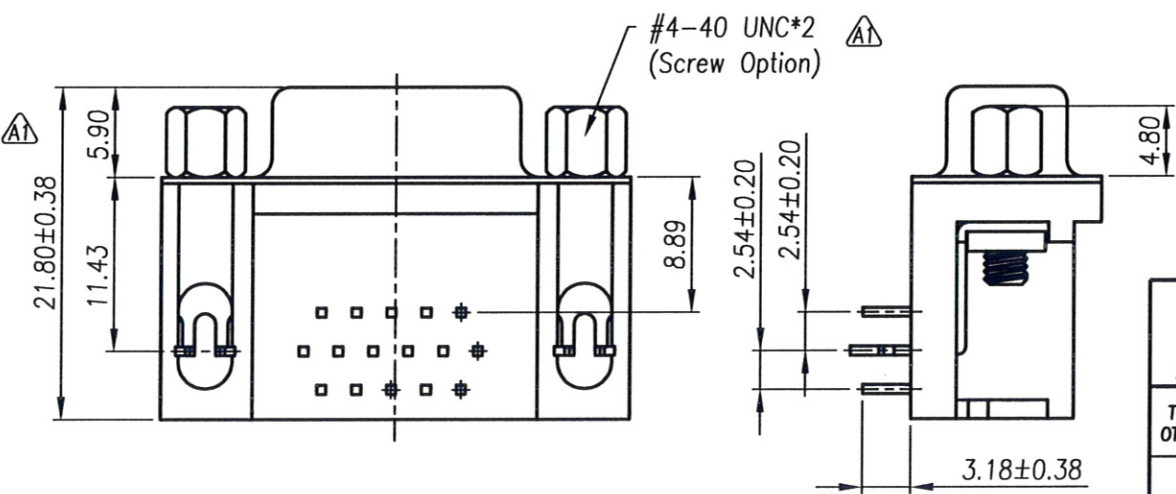
RoHS Compliant

REV	MODIFICATION	DATE	DRAW
A0	Release To FAI20121048	2012.11.06	Seven
A1	Release To ECN20130601	2013.06.03	Seven



PCB Outline
RECOMMENDED PCB LAYOUT
(TOLERANCE±0.05)

- Material:
- Housing: Thermoplastic UL94V-0
 - Contact Pin: Copper Alloy
 - Shell: SPCC
 - Rivet: Copper Alloy (Lead ≤ 40000ppm)
 - Board Lock: SPCC
 - Screw: SPCC
- Finish:
- Housing: See P/N Option
 - Contact Pin: See P/N Option
 - Shell: Nickel Plated.
 - Rivet: Nickel Plated.
 - Board Lock: Sn Plated.
 - Screw: Sn Plated.



Part No.: FDA XX 01 15 4 4 Y 9


△ Lockup Screw
01: Lockup Screw
04: Without Screw

No. Of Pin
15P

Housing Material
4: PBT UL94V-0 Black


Packing
Y: Tray

Plating
4: Gold Flash Plated On Contact Area.
Sn Plated On Solder Tail.
Ni Under Plated Over All.



金上達科技股份有限公司

GOLDENSUNDA TECHNOLOGY CO., LTD

TOLERANCE UNLESS OTHERWISE SPECIFIED		PROJ. 	TITLE: D-SUB Female 90° 15P DIP		
.x± 0.35	x.± 2'	APR. Jay 20130603	PART NO. FDAXX011544Y9		DWG NO. FDAXX011544Y9
.xx± 0.25	.x'± 1'	CHK. Michelle 20130603	UNITS: mm	CUSTOMER DRAWING	
.xxx± 0.15	.xx'± 0.5'	DRA. Seven 20130603	SIZE: A4	SCALE 2:1	SHEET 1 / 1 REV A1 V