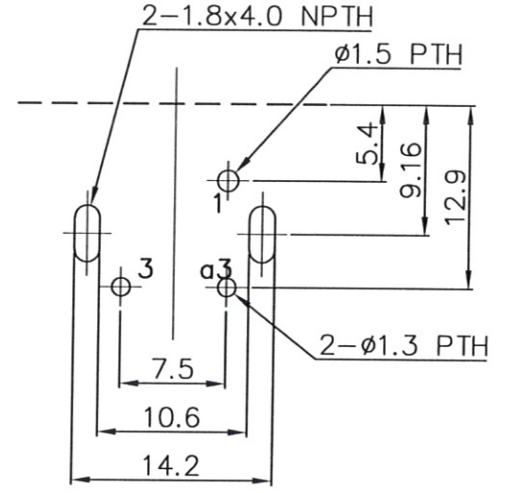
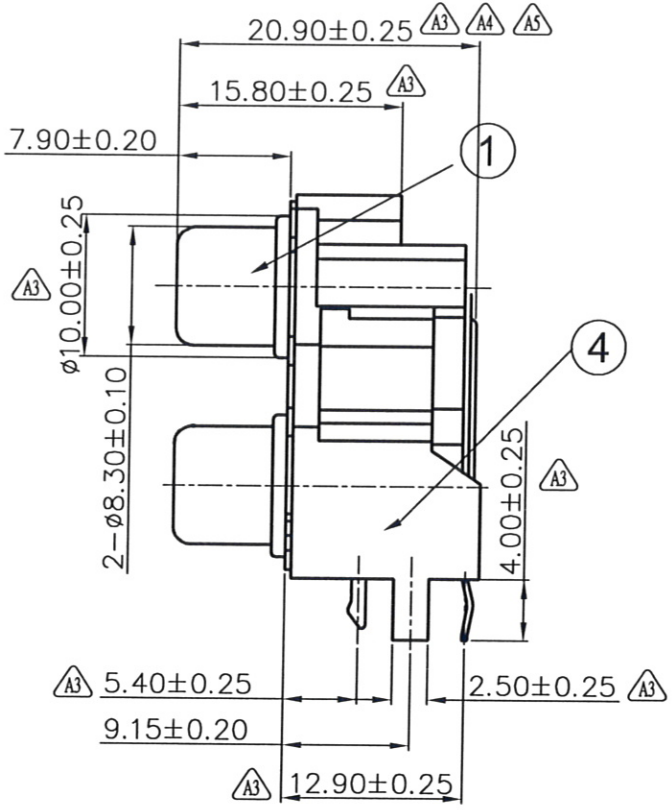
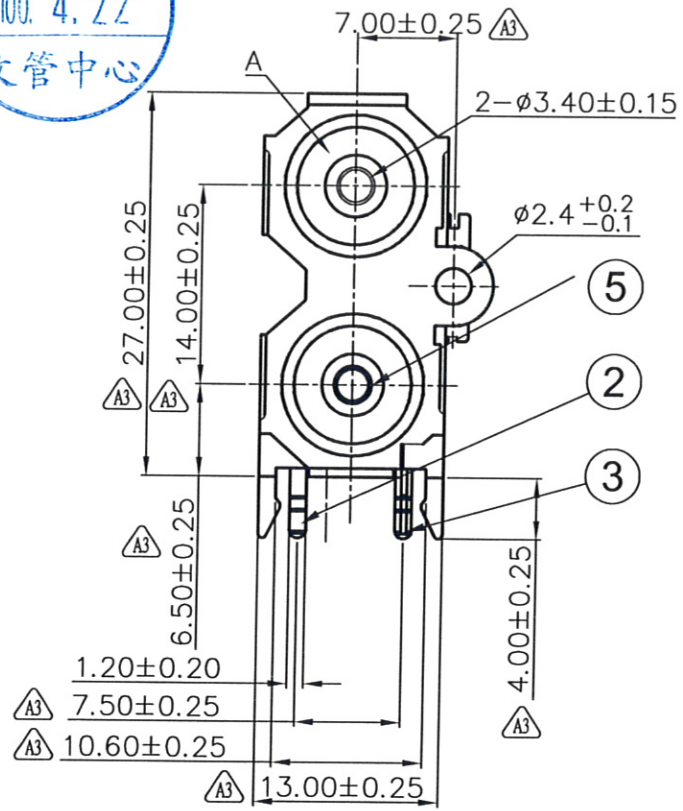


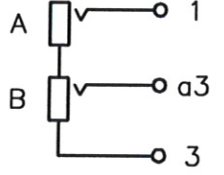
REV	DESCRIPTION	DATE	NAME
A/3	Refer To ECN201103017	2011.03.25	IVY
A/4	Refer To ECN20110405	2011.04.07	IVY
A/5	Refer To ECN20110410	2011.04.19	IVY



PCB LAYOUT
BOTTOM VIEW
T=1.60mm

Specification

- 1.Current Rating:1.0A DC
- 2.Voltage Rating:12V DC
- 3.Contact Resistance:30mΩ Maximum
- 4.Insulation Resistance:100MΩ Minimum
- 5.Dielectric Withstanding Voltage:AC 500V
- 6.Insertion And Extraction Force:3-30N
- 7.Life Test:500 Cycles



Circuit Diagram

RoHS Compliant

ITEM	PARTS NAME	SPECIFICATION	STANDARD	Q'TY	REMARK
5	SHIELD	SPCC Gold Flash		1PCS	.
4	TERINAL	Brass C2680R Tin Plated		1PCS	.
3	TERINAL	Brass C2680R Tin Plated		1PCS	.
2	WASHER	PBT UL94V-0 Color:A=White,B=Red711U		2PCS	.
1	HOUSING	PA46+15%GF Color:Black		1PCS	.

TOLERANCE		NAME	DATE	金上達科技股份有限公司 SUNDA TECHNOLOGY CO., LTD. TITLE/品名: RCA Jack 2 Port(2x1) Up White Down Red DIP 90° Type
X.X	±0.25	IVY	2011.04.19	
X.XX	±0.15	Seven	2011.04.19	
X.XXX	±0.05	Jay	2011.04.19	
ANGULA ±3°		UNITS: mm	SCALE: Free	SIZE: A4
UNLESS OTHERWISE SPECIFIED		PART NO.	GDB04010323YB	1/1